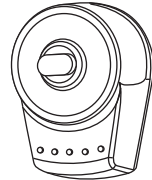


# PPB-2 Wireless Push Button Guide

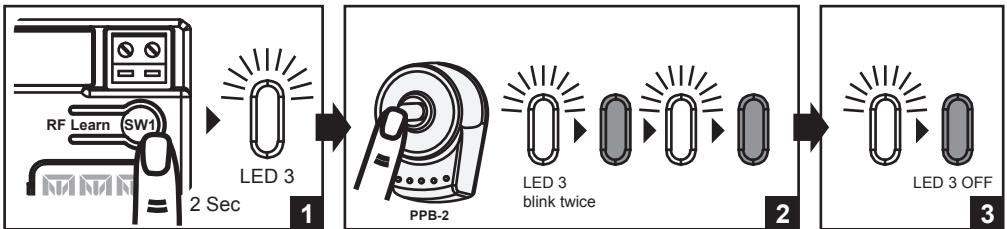
## SPECIFICATION:

Application	For indoor use
Installation	Wall mounted vertically
Operating Temperature	-20°C~+50°C
Dimension	85mm*60.5mm*40.0mm



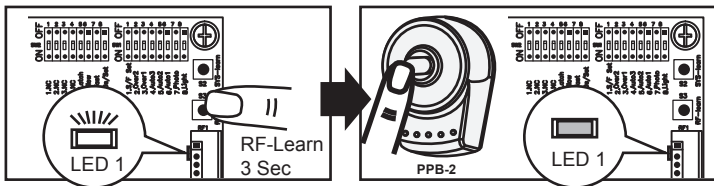
## 1. Push Button Push Button Learning (PL600/1000)

Press "RF Learn" button for 2 seconds, and the LED3 is on; then press the button; the LED3 will blink twice and then be off. The push button learning is completed.



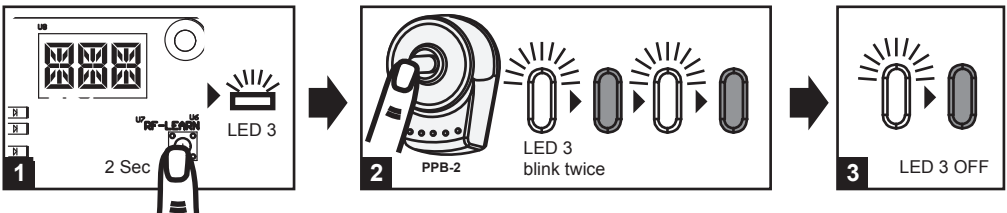
## 2. Push Button Push Button Learning (PC200)

Press and hold the S3 button on PCB for 1 second and then RF LED will be "on". Press the button. The push button learning is completed when RF LED is "OFF".



## 3 Push Button Push Button Learning (PL500)

(1) Push Button Memorizing: Press "RF Learn" button for 2 seconds, and the LED3 is on; then press the push button ; the LED3 will blink twice and then be off. The push button learning is completed.



Powertech Automation Inc.

Address: 10F., No.100-1, Minquan Rd., Xindian Dist., New Taipei City 231, Taiwan (R.O.C.)

TEL: +886 2 86675222 FAX: +886 2 86675223 Email: sales@powertech.tw

www.powertech-automation.com

